



# Veneered panels Catalogue









---

## Veneered panels Catalogue



# INTRODUCTION





# Veneered panels Catalogue

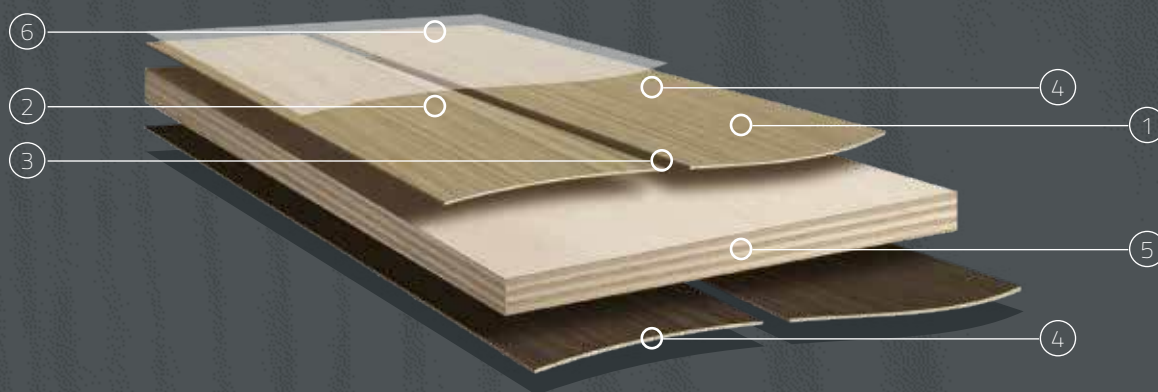


## OUR VENEERED PANEL LINE IS THE RESULT OF A PRODUCT CULTURE BASED ON OVER 50 YEARS OF EXPERIENCE.

HIGHLY QUALIFIED PERSONNEL WITH A PASSION FOR THEIR WORK, HAVE DEVELOPED SPECIFIC WOODWORKING SKILLS.

### How to design a veneered panel to meet the customer's requirements

Bnext's technical service helps our customers design the best veneered panel to meet their needs.



#### THE DESIGN PHASES

- ① CHOOSING THE WOOD
- ② DECIDING WHICH SLICING TECHNIQUE TO USE FOR THE VENEER
- ③ DECIDING WHICH JOINTING TECHNIQUE TO USE FOR THE VENEER
- ④ CHOOSING THE QUALITY OF THE FRONT AND REAR VENEERS
- ⑤ CHOOSING THE SUPPORT ON WHICH TO BOND THE VENEER
- ⑥ CHOOSING THE SURFACE TREATMENT AND FINISH (OPTIONAL)



## What is a veneered panel?

A veneered panel consists of a support panel with two natural or reconstructed veneer faces. It's real wood, what's more it's made of fine woods carefully selected by specialists on the basis of the best craftsman's practices.

## Every veneer is unique

Veneering is a very old technique, the foundations of which to this day depend on the time-tested skills of highly skilled experts who select the best trees and plantations, often from the remotest of regions, to produce the wood skilled craftsmen will then turn into a natural, unique panel.

Nature creates truly unique and exclusive products. Every single tree has at least one feature that makes it different from all the others, even trees of the same species and family. Its trunk, grain, knots, tell the unique tale of this one particular tree. This unique quality is passed on from the tree to the veneered panel.

The core of the log is sliced into thin strips of wood, which are jointed together into a sheet of veneer that's then bonded to the core panel.

The choice of the wood, the way the log will be sliced and the veneer jointed, provide an infinite number of possible combinations with one common denominator: originality, the natural character and high aesthetic quality of the panel.

A veneered panel is not only unique, it's natural too. This is one of the intrinsic characteristics of veneered panels, something that differentiates them from laminated or melamine faced panels. The latter are decorative panels made of synthetic materials, used to reproduce wood grain in a standardized, industrial process.

A veneered panel is a "living" element, that changes its appearance on the basis of the light and settings in which it is used, to create beautiful environments and furnishings, authentic, welcoming additions to the quality of your living space.





# WOODS





# Veneered panels Catalogue



## BNEXT CAN OFFER ONE OF THE BIGGEST SELECTIONS OF WOOD TYPES ON THE MARKET.

THANKS TO OUR PRODUCT CULTURE AND A LONG-STANDING NETWORK OF OVER 60 PARTNERS THAT CATER FOR THE ENTIRE SUPPLY CHAIN, EVEN IN THE REMOTEST OF AREAS. THE DIRECT CONTROL OF THE GUARANTEED AND CERTIFIED SUPPLY CHAIN MEANS OUR CUSTOMERS CAN BE CERTAIN THEY'RE MAKING A SUSTAINABLE, ENVIRONMENTALLY-FRIENDLY PURCHASE.

In the following pages you'll find more than 40 wood types available in our catalogue\*. Reconstructed veneers can also be used to meet the customer's specific requirements.

*\* Different wood types can be found on the market to meet the customer's requirements.*

### Thickness

*The standard veneer thickness is 0.6 mm.*

*Thicker veneers are available on request: 1.0, 1.5, 1.8, 2.5 mm.*

*Thicker veneers are used for parquet or for deep scratched or brushed finishes.*

### Reconstructed veneer

*Several thin rotary cut sheets of colored wood are bonded together into a block, which is then slice cut into veneer. The wood layers simulate the structure of the tree trunk, recreating the grain and the "mottled" effect of natural veneer, while guaranteeing the complete uniformity of different production batches.*






## The peculiarities of veneers

Every plant comes from a distinct geographical area and has its own unique characteristics;

for example:

- **Anigre** (Tanganyika walnut): An African high forest tree. The best quality comes from Ivory Coast forests.
  - **Oak**: Common in France, Hungary and Ukraine, the finest wood comes from the Slavonia region of Croatia. This tannin-rich wood type has always been the wood of choice for Barrique and Tonneaux casks used to age the finest wines.
  - **Walnut**: This wood is a classic that's been used for centuries to make fine furniture. It's from European trees common in France, Serbia, Macedonia and Romania. In Italy the most select wood comes from the province of Cuneo, in Piedmont.
  - **Olive**: the finest Italian wood comes from Apulia, this hardwood has a very fine, compact grain, it's homogeneous and resistant to woodworm.
  - **Lebanon cedar**: Often found in the parks of noble Italian residences, it has a very characteristic scent. It's naturally resistant to woodworm.
- 



- ① Silver Fir
- ② Spruce
- ③ European Maple
- ④ Rotary Cut Birch
- ⑤ Chestnut
- ⑥ Lebanon Cedar
- ⑦ Black Cherry
- ⑧ Lemon Scented  
Monterey Cypress
- ⑨ Douglas Fir

①



④



⑦





②



③



⑤



⑥



⑧



⑨





- ⑩ Eucalyptus
- ⑪ Semi-evaporated Beech wood
- ⑫ Ash
- ⑬ Olive Ash
- ⑭ Ebony
- ⑮ Iroko
- ⑯ Kaya
- ⑰ Larch
- ⑱ Sapele Mahogany

⑩



⑬



⑯





11



12



14



15



17



18





①⑨ Honduran Mahogany

②⑩ Hickory

②⑪ European Walnut

②⑫ Okoumé

②⑬ Padouk

②⑭ Santos Rosewood

②⑮ Knotty Pine

②⑯ Scots Pine

②⑰ Red Gum

①⑨



②⑫



②⑮





20



21



23



24



26



27





28 Red Oak  
(American red oak)

29 Oak

30 Knotty Oak

31 Dark Knotty Oak

32 Oak  
(Saw cut effect)

33 Stripped-Grain  
Tanganyika

34 Flamed-Grain  
Tanganyika

35 Tanganyika Frise

36 Teak

28



31



34





29



30



32



33



35



36





- ③⑦ White Tulipwood
- ③⑧ Green Tulipwood
- ③⑨ Olive
- ④① Wenge
- ④① White Oak  
(*American white oak*)
- ④② Yellow Pine
- ④③ Zebrawood
- ④④ Zircote

③⑦



④①



④③





38



39



41



42



44





# THE AESTHETIC QUALITIES OF THE VENEER FACES





# Veneered panels Catalogue



## CHOOSING THE RIGHT AESTHETIC QUALITIES OF THE VENEER FACES FOR EACH SPECIFIC APPLICATION IS VERY IMPORTANT.

YOU CAN ALSO USE DIFFERENT QUALITIES OF VENEER FOR THE TWO VENEER FACES OF THE PANEL.

BNEXT'S TECHNICAL SERVICE HELPS THE CUSTOMER MAKE THE BEST CHOICES FOR THEIR DESIGN, THE PARTICULAR APPLICATION AND BUDGET.

### Bespoke

A type of veneer made of only the finest woods, one-of-a-kind, where every feature is a distinctive mark. Customers can use our dedicated, bespoke consulting service to select unique woods for the most original designs, letting the tree tell its story.

### Design

These veneers are obtained from uniform logs of the highest quality. The veneers are arranged in regular sequences to produce a striking visual and aesthetic effect. The panels are also numbered to be used in a sequence, so there is a uniform and continuous progression in the design from one panel to the next.

#### Features

- regular, well-defined grain
- uniform color, free of variations and anomalies
- small, almost invisible natural variations are tolerated as these are typically found in these specific woods
- decorative veneer

### Contact us

*Do you want to choose the most suitable veneer to meet your requirements?*

*make an appointment with one of our veneer Specialists to make the most of our bespoke service.*





## Classic

Standard version, suitable for most circumstances and applications. Some natural features of the wood can be seen on the veneer, without having a negative effect on the final aesthetic result.

This quality is characterized by the regular sequence of the veneers, although to a lesser extent than with the Design veneers.

### Features

- less marked grain
- slight color variations
- with fewer smaller knots, the natural look of the product is guaranteed
- wide range of applications

## Commercial

This veneer quality is used for panels characterized by the natural, irregular grain, typically found in wood. These panels are very low cost.

### Features

- natural, irregular grain
- decoloration and mineral veining also available
- evident knots are tolerated as long as they are healthy
- suitable for low-cost applications

## Rear/Counterbalancing

In all applications that don't require any special characteristic aesthetic finish for the second veneer face, we can counterbalance the panel by applying sliced cut veneers or rotary cut veneers of a variable quality to the rear of the panel, not defined by any standard.



# SLICING TECHNIQUES





## Veneered panels Catalogue

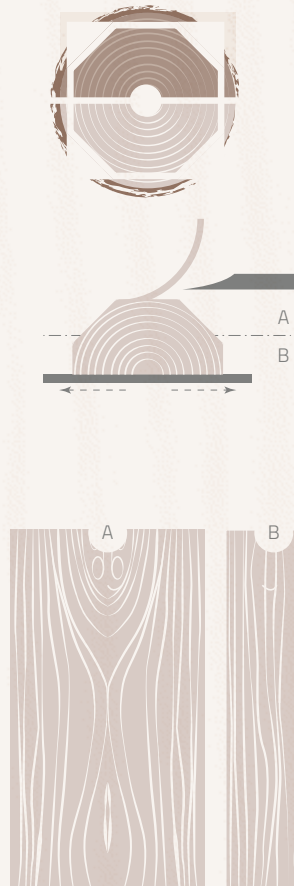


**FIRST THE LOG IS SLICED INTO TWO OR MORE PARTS. IT'S THEN CUT INTO SLICES OF VARYING THICKNESSES TO MEET SPECIFIC REQUIREMENTS.**

THE SLICE CUTTING TECHNIQUE CHANGES THE APPEARANCE OF THE VENEER, PRODUCING DIFFERENT GRAIN PATTERNS.

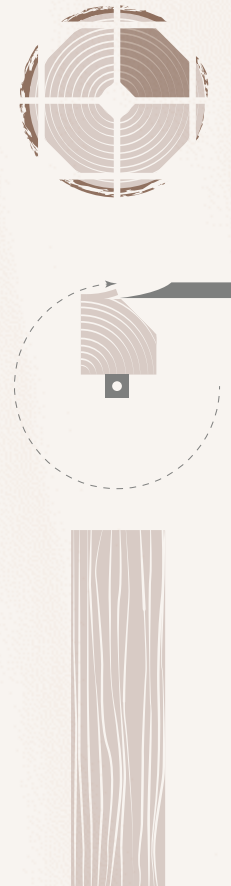
### Crown cut

Used for flamed veneers



### Quarter rift cut

Use to produce striped veneers







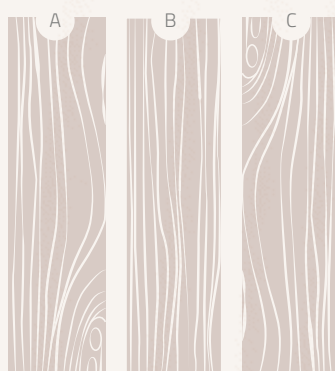
## Quarter normal cut

Used for striped veneers



## False quarter cut

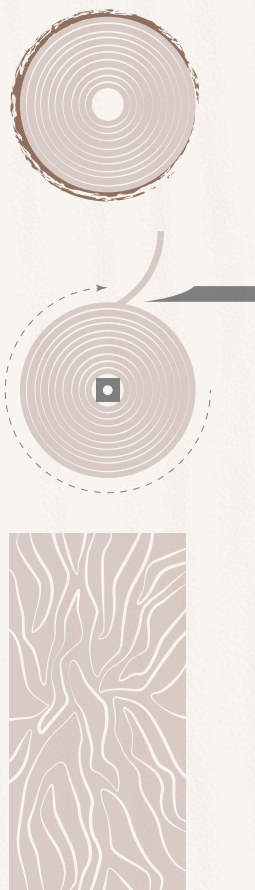
Used to obtain both flamed and striped veneers





## Rotary cutting

Used to produce rotary cut veneer









# JOINTING TECHNIQUES





---

## Veneered panels Catalogue



## THE SLICED CUT WOOD IS JOINTED USING THE LATEST TECHNOLOGY.

THE FOLLOWING ILLUSTRATIONS SHOW THE MOST COMMON TECHNIQUES USED TO CREATE A VENEER WITH THE DESIRED AESTHETIC EFFECT FOR EACH SPECIFIC APPLICATION.

### Book matched

This is the standard technique used to joint veneers in mirror images. The technique produces veneers where the next in series is the mirror image of the previous veneer.



### Slip matched

The veneers are facing the same way in the sequence





## Veneer jointing techniques

### Bonding

Standard jointing technique. Glue is applied on the thickness of the veneer using system of the latest generation, to obtain a perfect bond.

### Hot-melt string

The veneer is jointed using hot-melt string applied in a zig-zag layout with an electric jointing gun. This technique is used for rough, fibrous woods and for all particularly complex or bespoke jointing designs (e.g. Herringbone matched, Diamond matched, Diagonal matched, Strut matching, Cross matched, etc.)

## INTERESTING FACTS

*Some trees like beech and maple tend to be more fibrous in the part of the trunk facing north (less exposed to the sun) especially when growing in hilly or mountainous areas.*

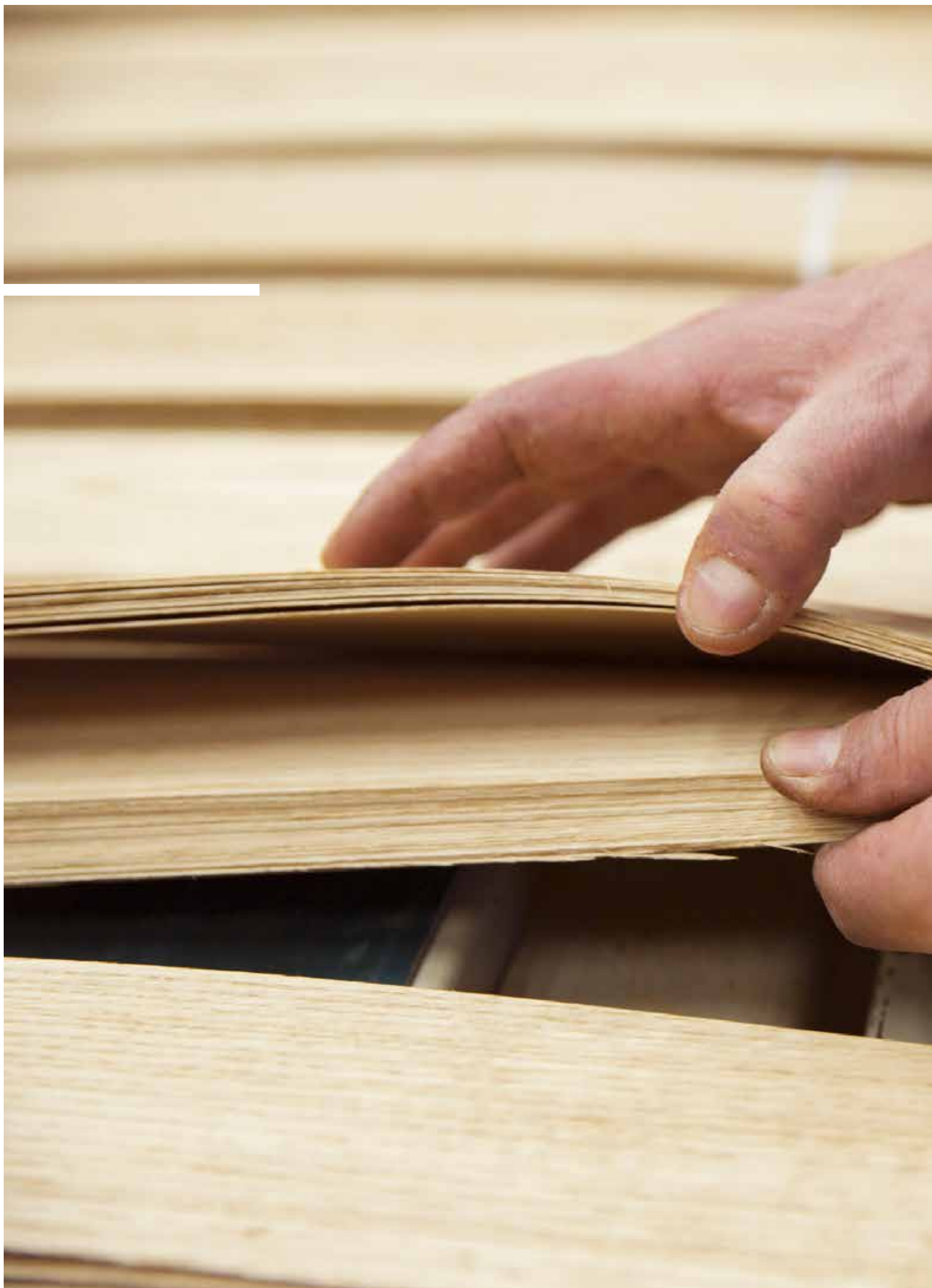


## Mixmatched

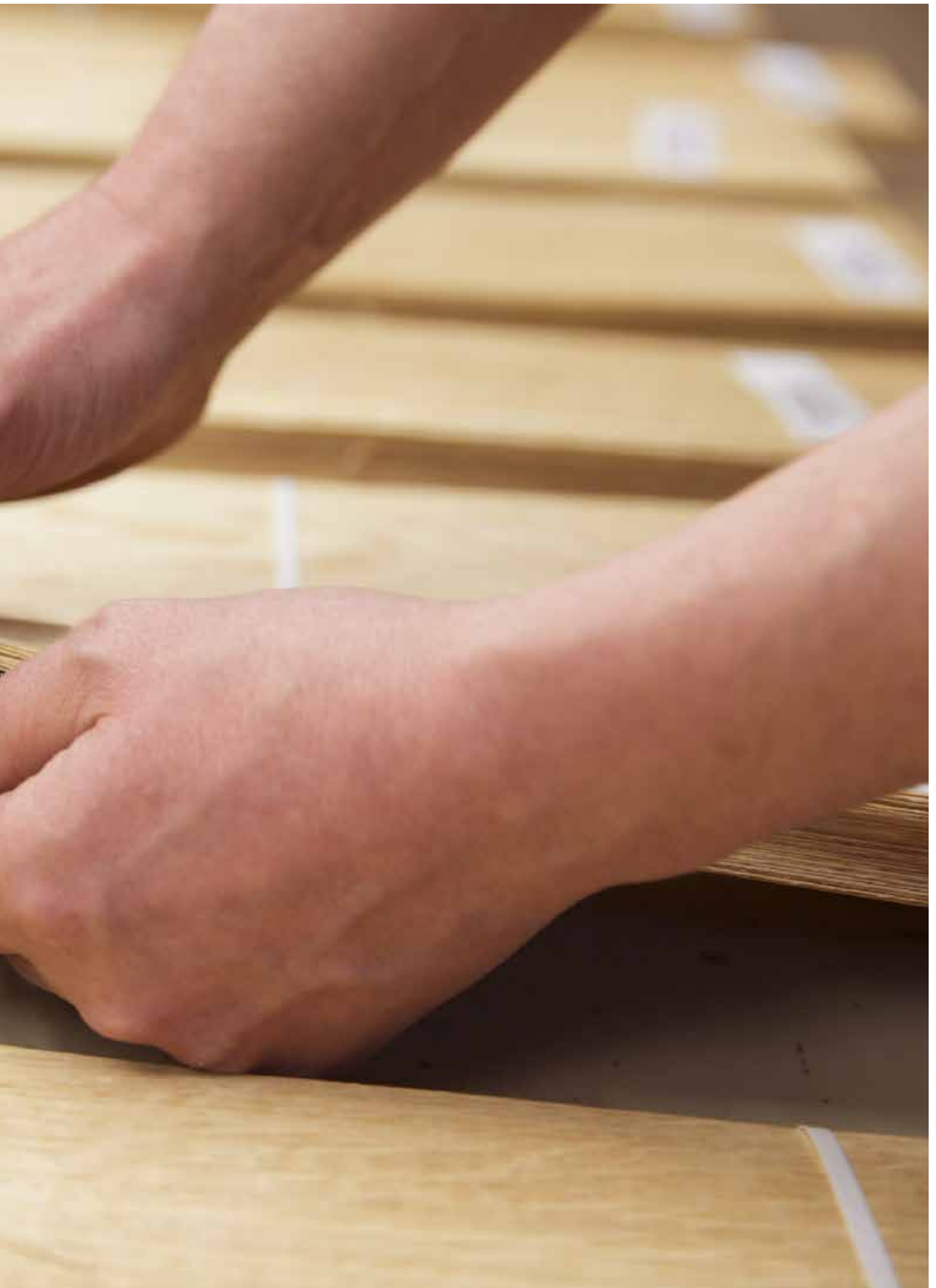
The veneers are arranged in an irregular way. The layout is designed specifically to guarantee aesthetic uniformity in the sequence of panels.













# SUPPORTS



---

## Veneered panels Catalogue



---

ONCE THE BEST VENEER HAS BEEN CREATED TO  
SUIT THE CUSTOMER'S REQUIREMENTS, IT'S TIME  
TO CHOOSE THE TYPE OF PANEL TO BOND IT TO.

---

### POPLAR PLYWOOD

Panel made entirely of crossed Poplar plies. These panels are available in various plies and outer face layouts. Plywood panels are very strong and long-lasting.









---

## BLOCKBOARD

Panel with a poplar or fir core, with 1 or 2 poplar plies on each side depending on the chosen ply layout. These panels are very strong and long-lasting and can be drilled also to deep depths.



---

## LSB

LSB is the first panel of its kind. This is an engineered panel made of virgin poplar wood. The core consists of oriented strands, and the faces are made of wood microparticles. This formaldehyde-free panel is moisture-proof. The LSB panel is great value for money.



---

## HDF

High-density fiberboard panel. This panel is characterized by a uniform thickness so it can also be drilled to deep depths.



---

## CHIPBOARD

Unfinished panel made of wood chips of different sizes obtained from various sources. Chipboard panels are low cost solutions.





*Thicknesses*

4      7      8      15      18      19      20      25      30      31

*Dimensions*

## BLOCKBOARD

### Long-grain oriented 7-ply veneered blockboard

3130 x 1850	▪									
3720 x 1850					▪					

### Long-grain oriented 5-ply veneered blockboard

3130 x 1250					▪			▪		
3130 x 1850					▪			▪		
3680 x 1850					▪			▪		

## LSB

3050 x 1250				▪		▪		▪	▪	
-------------	--	--	--	---	--	---	--	---	---	--

## HDF

2120 x 950	▪									
2160 x 3030	▪	▪								
2218 x 950	▪									
2500 x 1220		▪								
2800 x 2050						▪				
3030 x 2160	▪	▪								

## CHIPBOARD

3130 x 1860						▪		▪		▪
-------------	--	--	--	--	--	---	--	---	--	---

N.B.: Dimensions and thicknesses refer to the finished veneered panel.



# SURFACE TREATMENTS AND FINISHES



---

**Veneered panels** 2018



---

**BNEXT IS THE ONLY MANUFACTURER OF PANELS IN ITALY, AND ONE OF THE FEW IN THE WORLD, TO HAVE ITS OWN PAINTING LINE, WITH A PRODUCTION CAPACITY OF OVER 4,000 M<sup>2</sup> PER DAY.**

THE PAINTING DIVISION IS EQUIPPED WITH SYSTEMS AND INSTRUMENTATION OF THE LATEST GENERATION, TO OFFER A WIDE RANGE OF SURFACE TREATMENTS AND MEET EVEN THE MOST DEMANDING REQUIREMENTS OF OUR CUSTOMERS.





## UV coating

A UV coating is a protective surface treatment that brings out the natural wood grain. Bnext uses the latest acrylic UV, low COV emission, anti-yellowing paint, with a 100% dry residue.

PAINTING CYCLE	3 undercoats + 1 topcoat
> types of undercoats	natural effect or colored
> types of finishes	scratch-proof or silk effect (gloss: $20 \pm 2$ /MATT)



## Other treatments

- **Brushing:** process by which the wood pore is opened to obtain a "solid wood" effect.
- **Sawing:** used to obtain a "sawn plank" effect.
- **Over-coat:** mineral-based pigments can be applied to the veneered panel before it is painted to produce bespoke colors, guarantee more uniform production batches, and reduce photodegradation.
- **Clear protective film:** applied on request to protect the painted panels during shipment and assembly.

### Dimensional limits of the painting systems:

- thickness 45 mm
- dimensions 3050 x 1250 mm



PREMIUM  
SERVICE ★★★★★



---

**Veneered panels** 2018



---

CHOOSE BNEXT VENEERED PANELS TO TAKE  
ADVANTAGE OF THE CONSULTING SERVICE OFFERED  
BY OUR HIGHLY SPECIALIZED PERSONNEL.

WE WELCOME OUR CUSTOMERS, AND CAN OFFER  
ASSISTANCE IN ALL PHASES OF PANEL DESIGN.

### Make an appointment

*with our veneer experts*

*call: +39.0142.330111*

*or send an Email to: [premium.service@bnextgroup.com](mailto:premium.service@bnextgroup.com)*









**Italy HQ**

*S.P. 31 Bis Regione Cavallino, 8 - Coniolo (AL) - Italy*

**Hungary HQ**

*Ujzaszi Ut. 11 Szolnok – Hungary*

*Tel +39.0142.330111*

*info@bnextgroup.com*

Poplar is our world



**[www.bnextgroup.com](http://www.bnextgroup.com)**